

*Building better
communities
by fighting against
food insecurity*

ONE CLIENT'S STORY

No two Food Pantry clients are alike, but the need is real. We'd like to share the story of one of our clients, John.

Late one Monday afternoon we received a call from John, a single dad of four children and the sole supporter of his family. It was almost the end of our operating hours and he asked how long we would be open.

He went on to explain that he wanted to cook supper for his family that night, but had used all his groceries the previous day. Fortunately he would be paid the next day, but needed to feed his family that night.

John arrived at the pantry before closing time and a volunteer guided him around the pantry helping him with the food selection. John expressed his thankfulness many times to the volunteers that evening. He was so happy to be able to go home that evening and feed his family.

John seldomly uses the Food Pantry services and has done so only when his needs are the greatest.

Many of our clients comment "I didn't think I would ever be here".



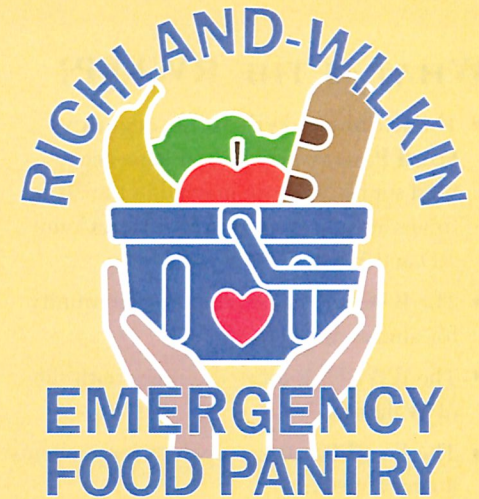
RICHLAND WILKIN EMERGENCY FOOD PANTRY

699 8th Ave. S
Wahpeton, ND 58075

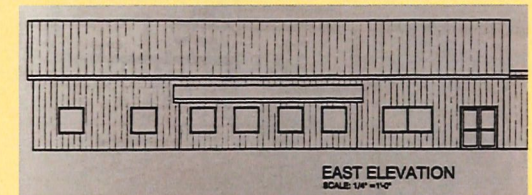
701-642-1921

rwfoodpantry@outlook.com

[Facebook.com/rwfoodpantry](https://www.facebook.com/rwfoodpantry)



***"EXPANDING THE
FIGHT AGAINST
FOOD INSECURITY"***



Expanding the fight against food insecurity

WHAT IS THE RWEFP?

- ◆ The **Richland Wilkin Emergency Food Pantry** provides an emergency food supply to those in need in the 20 towns and rural areas of Richland County, ND and Wilkin County, MN.
- ◆ The **RWEFP** has served the community for almost 40 years.
- ◆ The **RWEFP** is located on the south side of Wahpeton.
- ◆ The **Food Pantry** is open to serve clients 4 days a week.

WHO DO WE SERVE?

- ◆ Family Units
- ◆ College students
- ◆ Senior citizens
- ◆ K-12 students
- ◆ People with health issues
- ◆ Working families experiencing unexpected circumstances
- ◆ Anyone in need



RWEFP QUICK FACTS

- ◆ We served close to 500 clients a month in 2021.
- ◆ Over 300 students receive weekend food through the Backpack Program.
- ◆ Over 80 tons of food was distributed in 2021 (which equals the weight of an African elephant every month!).
- ◆ Our mobile unit serves Fairmount, Lidgerwood and Rothsay once per month.
- ◆ We operate with only one part-time paid employee and over 30 volunteers.
- ◆ Funding comes from grants, business donations and donations from individuals.



Current warehouse

FOOD PANTRY ADDITION & REPAIR PROJECT

Planning for a building update began in 2018 and includes these plans:

- ◆ **Construction** of an addition to the current pantry to include space for food distribution, operations of the school backpack program and warehouse space for our food supply.
- ◆ **Demolition** of the current storage building/shed that has failed.
- ◆ **Repair** of the roof on the existing pantry so it can be converted to warehouse space.

HOW ARE WE FUNDING THE EXPANSION PROJECT?

- ◆ We have secured some grant funding and donations.
- ◆ We are actively seeking other available grants and funding sources.
- ◆ We have been setting funds aside.
- ◆ We are asking community businesses and individuals for donations.

WE ONLY NEED TO RAISE \$150,000 IN ADDITIONAL FUNDS TO MEET OUR GOAL!

WITH YOUR HELP THE RWEFP CAN:

- ◆ Address safety concerns for all clients & volunteers in our facilities.
- ◆ Comply with ADA standards.
- ◆ Create adequate & safe storage.
- ◆ Add a demonstration kitchen/classroom to provide clients with additional cooking and nutrition information.
- ◆ House our programs in one location.